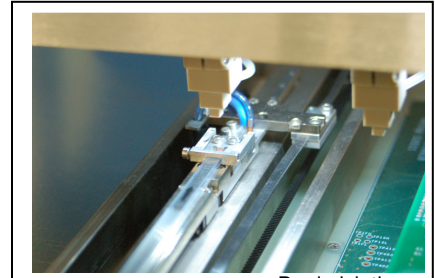




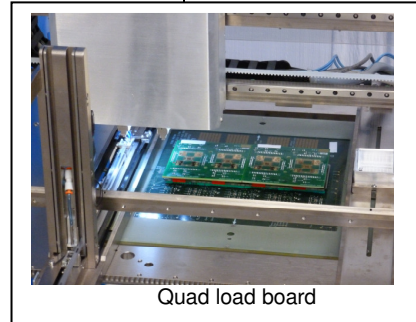
11414 Cockeburr Road  
Roanoke, Texas 76262  
(214)-215-3751  
Fax (682)-237-4700  
www.peakautomation.com



ALM-MINI shown with tube stackers and bulk bin



Dual pick tips



Quad load board

## Maximum flexibility - Low cost

The ALM-MINI Direct Dock Test Handler is an extremely low cost low footprint test handler, designed for small lot processing. Minimal tooling is required and the ALM-MINI will set-up quickly and can dock to almost any test platform.

The primary features and benefits are:

**DIRECT DOCKING:** Handler-side docking plates are designed and provided by Peak for almost any test platform, permitting rapid change-over from tester to tester. Peak can also provide adapter plates so that custom and prototype boards can be used on the handler, with or without direct docking. The frame can be configured easily to fit with any manipulator and test head.

**TOTAL FLEXIBILITY for INPUT/OUTPUT:** A unique system allows a single latch to be used to secure any input/output combination(s) to be installed in seconds. Any input/output can be used. Standard modules include: 2 3/4" WAFFLE PACKS, JEDEC TRAYS, TUBES, VIBRATORY BOWL, DE-TAPER, TAPE & REEL, and BULK BINS. Multiple output modules can be used to sort pass/fail or grading. Stackers for tubes, trays, and waffles can also be added. Custom inputs/outputs can also be provided. All configurations are stored in recipes.

**MULTI-SITE TESTING, EASY ACCESS TO LOAD BOARD:** The docking plate usually can be designed to allow the load board to be serviced and removed while still docked, facilitating quick change over of sockets and load boards and easy access to examine the test process. Multi-site (up to OCTAL) testing can be accommodated.

**FLEXIBLE INTEGRATION OF PROCESSES:** The ALM-MINI comes standard with a built-in full complement of features including: Orientation before and after testing, Vision fine-alignment at each station, vision inspection of test socket.

11414 Cocklebur Road    Roanoke, Texas 76262  
(214)-215-3751    Fax (682)-237-4700    www.peakautomation.com

**The ALM-MINI is the perfect solution for low volume ultra-low cost testing.**

Call us, or visit our website for more information on the ALM-MINI.

## SPECIFICATIONS

### Part Input / Output Configurations

#### PART INPUT METHODS

- JEDEC trays – (2 or stacker)
- 2" Waffle packs – (4 or stacker)
- 4" waffle packs – (16 or stacker)
- Tubes – Manual or Auto-stacked.
- De-taper

#### PART OUTPUT METHODS

- JEDEC trays – (2 or stacker)
- Tape & Reel
- 2" Waffle packs – (4 or stacker)
- 4" Waffle packs – (16 or stacker)
- Tube stacker – manual or auto-stacked
- Bulk bins

### Processes Available for Integration

- Electrical testing – Cable or Board dock
- Multi-site testing
- Vision inspection
- Media Transfer
- Hot/Cold Testing at socket (conductive or convective heating methods available)

### Manipulator Specifications

- Gantry travel 24"x4"
- Maximum Linear Speed 5"/s

End Effectors / Grippers will be provided that match the part to be processed in the machine. Multi-part end effectors can be used to duplicate walking beam motion and improve throughout.

### Controls

- PLC controller. Extra I/O available
- PC Touchscreen.
- Full featured HMI: Passwords, graphic counter arrays, pull-down menus, graphics, bit-map images, pass/fail/status indicators, alarm history, diagnostic screen, manual activation screen

The HMI incorporates graphics and pictures for ease of use. It comes with a variety of process modules pre-programmed, which the user can select when changing configurations. The PLC has spare I/O available and can add more if needed to integrate more complicated processes.

### Safety

- Emergency Stop buttons
- Interlocked Safety enclosure
- Light curtain optional
- CE Certification available

### Dimensions

- Width 40"
- Depth 26"
- Height 14"

Dimensions may not include integrated processes, and may change for customer specific configurations.

### Utilities / Environment

- Power: 120 VAC 1-phase, 20 Amp
- CDA/N2: 80-100 psi @ 3 cfm. Internal regulator & SOV provided.
- Clean room certified option.
- The ALM-MINI comes standard with Ethernet connectivity for remote service.
- RS-232, Parallel, GPIB, Secs/GEM

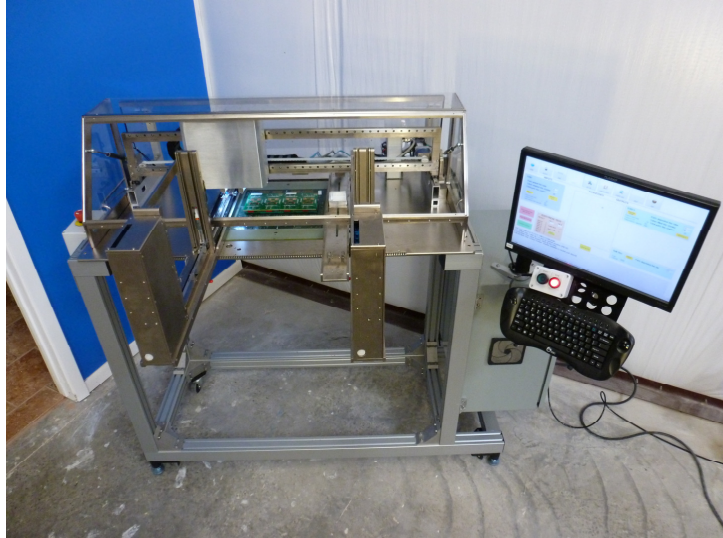
# ALM-MINI Direct Dock Test Handler

## Ask about these options:

- Hot/Cold testing using conduction or convection.
- Custom test socket and load board accommodation.

## Device Application Examples:

BGA	CPGA	HSOP
PGA	SOP	COB
CQFP	MLF/MLP	PLCC
SOT-xx	CFP	CSP
MCM	SC-xx	TO-xx
DIP	Micro-X	SOIC-xx
Chip cells	TSOP	TSSOP
Capacitors	MSOP	WSP
QFN	Coupon boards	



Call us, or visit our website for more information on the ALM-MINI

## **Sales Representative:**

